

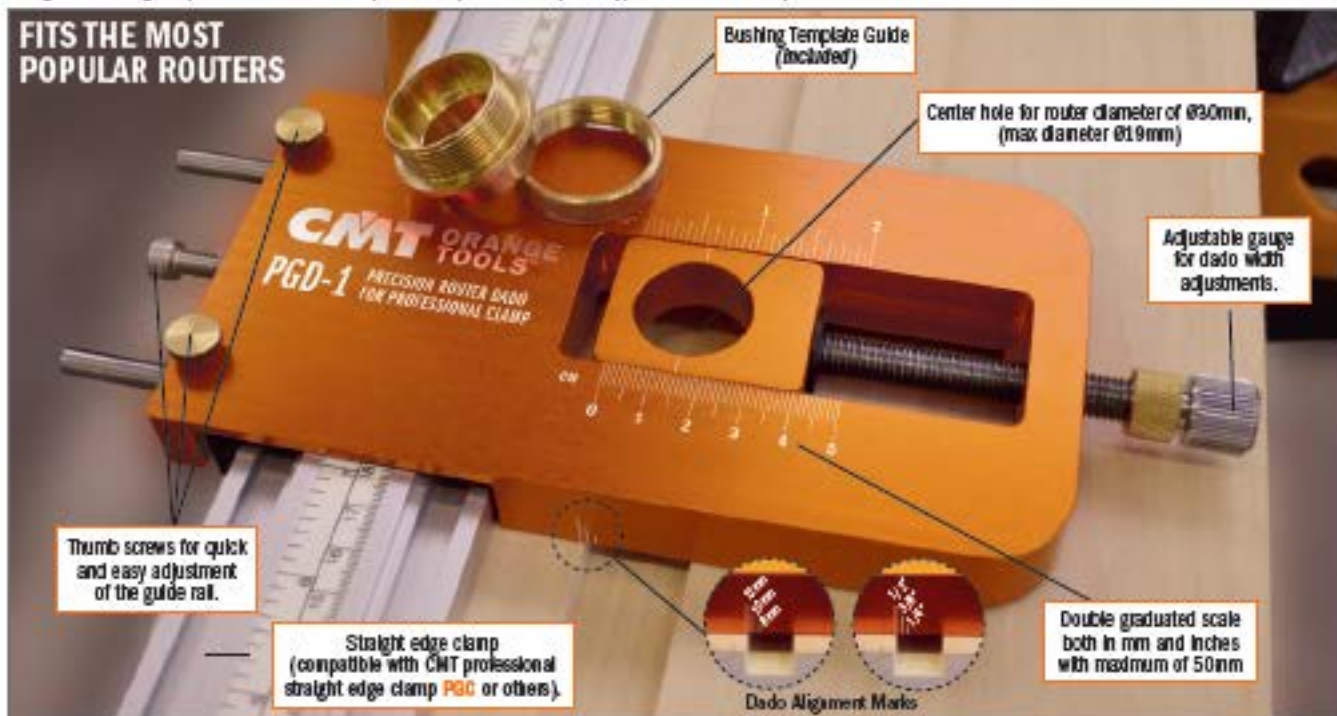
Adjustable Precision Router Dado Jig

CMT ORANGE TOOLS

PGD-1

The perfect tool for crafting grooves, dados, and joints. Easy to use and fully adjustable. You can create dados of any size using the same router by simply increasing the number of passes you make. Sturdy construction built to last. Smooth rolling steel rollers are ideal for easy maneuverability and stress-free handling. Compatible with almost any router equipped with 1-3/16" (30mm) bushings or by using the Bushing Template Guides Included. (bore baseplate sold separately). Guarantees clean precise dados.

FITS THE MOST POPULAR ROUTERS



Prepare your router. Install the guide bushing rings into the bore baseplate and then attach it as the base for your router. Select and insert your router bit. Prepare the Adjustable Guide Rail & Straight Edge Clamp: Position both the adjustable straight edge clamp and the adjustable precision router dado jig onto your workpiece. Then using the adjustable thumb screws, secure it. Once assembled, ensure that the adjustable precision dado jig slides freely.



Insert your router into the center hole of the adjustable precision router dado jig.



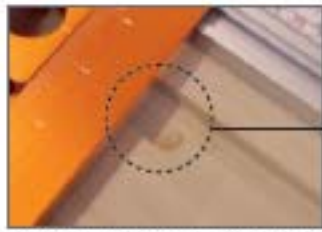
Set your cutting depth by raising or lowering the bit until desired depth is reached. Determine the starting point of the cut you wish to make by using the Dado Alignment Marks on the long sides (width) of the Adjustable Precision Router Dado Jig which indicates the outside edge of the dado cut closest to the straight edge clamp (12-10-8mm front, 1/2", 3/8", 1/4" back).



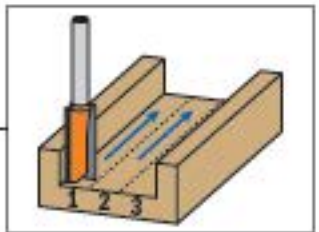
Holding onto your router in position, power on and begin making the cut by pushing forward and back on the straight edge clamp using the precision router dado jig as a guide. Makes impeccable grooves and dados along the length of your workpiece.



For creating dados that exceed router width, using the adjustable gauge, simply select the desired width on the graduated scale.



Make as many passes necessary to obtain the desired dado width.



RECOMMENDED* (not included)

Universal Router Base

899.000.01 or

899.000.02 Prebored base for CMT7E/CMT8E

*Not required for routers with 30mm (1-3/16") bushing guide

RECOMMENDED (not included)

PGC Straight Edge Clamp with graduated scale (pag. 386)

DESCRIPTION	QUANTITY	ORDER NO.
Adjustable Precision Router Dado Jig	10	PGD-1

